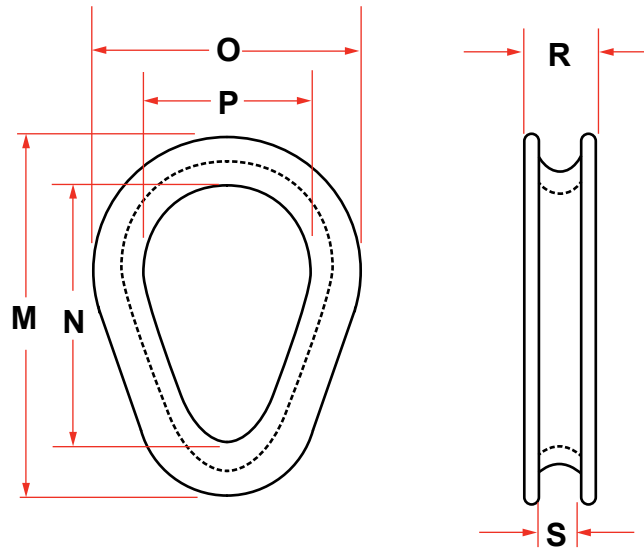


## HAWSER THIMBLES



### HEAVY DUTY HAWSER THIMBLE GALVANIZED OR SELF-COLORED

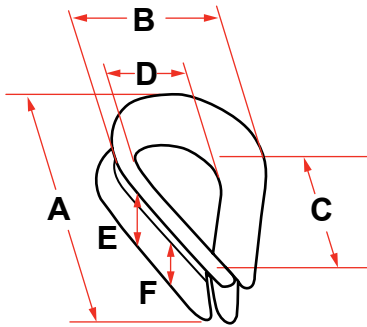
CAST, 1035 S

DIMENSIONS (INCHES)							WEIGHT (LBS.)
ROPE DIAMETER	M	N	O	P	R	S	
5/8 - 3/4	6-3/4	4-7/8	5	3	1-1/4	13/16	2-1/2
7/8 - 1	8-5/8	5-3/4	6-1/4	3-3/4	1-7/16	1-1/16	4-1/2
1-1/8 - 1-1/4	10-1/8	6-3/4	7-1/4	4-1/4	1-11/16	1-5/16	9
1-3/8 - 1-1/2	11-1/2	8	8-1/2	5	2-1/4	1-5/8	14
1-5/8 - 1-3/4	12-1/2	8	9-3/4	5	2-1/2	1-7/8	20
1-7/8 - 2	14-3/4	9-1/4	11-1/4	5-3/4	2-3/4	2-3/16	30
2-1/8 - 2-1/4	17	10-1/2	12-3/4	6-1/4	3-1/4	2-1/2	52
2-3/8 - 2-1/2	21	14-1/2	15-1/2	9-1/2	3-3/4	2-3/4	80
2-3/4 - 3	21	14-1/8	16	9	4-1/4	3-1/4	115

Larger Sized Available Upon Application.  
Furnished with or without Reinforcement Plate (\*Gusset). Cast Alloy Available upon Request.

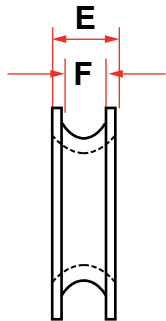
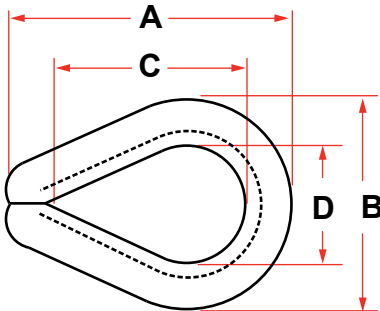
## WIRE ROPE THIMBLES

### STANDARD WIRE ROPE THIMBLES, GALVANIZED STEEL



CLIP AND ROPE SIZE (INCHES)	DIMENSIONS (INCHES)						MAXIMUM PIN DIAMETER (INCHES)	WEIGHT LBS. PER 100
	A OVERALL	B OVERALL	C INSIDE	D INSIDE	E OVERALL	F INSIDE WIDTH OF SCORE		
1/8	1-15/16	1-1/16	1-5/16	11/16	1/4	5/32	5/8	3.3
3/16	1-15/16	1-1/16	1-5/16	11/16	5/16	7/32	5/8	3.4
1/4*	1-15/16	1-1/16	1-5/16	11/16	3/8	9/32	5/8	3.5
5/16*	2-1/8	1-1/4	1-1/2	13/16	7/16	3/8	3/4	4.0
3/8*	2-3/8	1-15/32	1-5/8	15/16	17/32	7/16	7/8	7.5
1/2*	2-3/4	1-3/4	1-7/8	1-1/8	11/16	9/16	1-1/16	15.8
5/8*	3-1/2	2-3/8	2-1/4	1-3/8	29/32	11/16	1-1/4	36.0
3/4	3-3/4	2-11/16	2-1/2	1-5/8	1-3/32	13/16	1-1/2	50.0
7/8	5	3-3/16	3-1/2	1-7/8	1-9/32	15/16	1-3/4	90.0
1	5-11/16	3-3/4	4-1/4	2-1/2	1-3/8	1-1/16	2-3/8	105.0
1-1/8 - 1-1/4	6-1/4	4-5/16	4-1/2	2-3/4	1-3/4	1-5/16	2-5/8	176.0
1-1/2	7-1/2	5-3/8	5	3-1/4	2-1/16	1-9/16	3-1/8	330.0
1-3/4	10-3/4	7-1/4	7-1/4	4-1/4	1-3/8	1-7/8	4-1/8	590.0
2	10-3/4	7-1/4	7-1/4	4-1/4	2-5/8	2-1/8	4-1/8	595.0

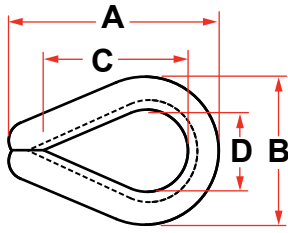
\* Available in opened pattern. Suggested for light duty service only.



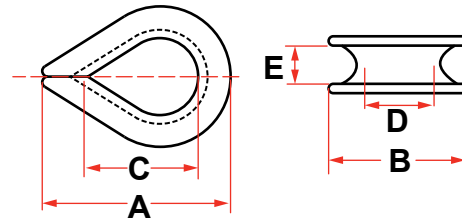
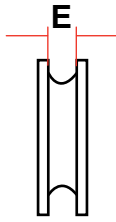
### EXTRA HEAVY DUTY WIRE ROPE THIMBLES, GALVANIZED STEEL

CLIP AND ROPE SIZE (INCHES)	DIMENSIONS (INCHES)						MAXIMUM PIN DIAMETER (INCHES)	WEIGHT LBS. PER 100
	A OVERALL	B OVERALL	C INSIDE	D INSIDE	E OVERALL	F INSIDE WIDTH OF SCORE		
1/4*	2-3/16	1-1/2	1-5/8	7/8	13/32	9/32	13/16	7.5
5/16*	2-1/2	1-13/16	1-7/8	1-1/16	1/2	11/32	15/16	14.0
3/8*	2-7/8	2-1/8	2-1/8	1-1/8	21/32	13/32	1-1/16	25.0
7/16	3-1/4	2-3/8	2-3/8	1-1/4	3/4	15/32	1-3/16	36.0
1/2*	3-5/8	2-3/4	2-3/4	1-1/2	27/32	17/32	1-7/16	51.0
9/16	3-5/8	2-11/16	2-3/4	1-1/2	29/32	19/32	1-7/16	52.0
5/8*	4-1/4	3-1/8	3-1/4	1-3/4	1	21/32	1-5/8	75.0
3/4*	5	3-13/16	3-3/4	2	1-1/4	25/32	1-7/8	147.0
7/8	5-1/2	4-1/4	4-1/4	2-1/4	1-3/8	15/16	2-1/8	185.0
1*	6-1/8	4-15/16	4-1/2	2-1/2	1-9/16	1-1/16	2-3/8	295.0
1-1/8 - 1-1/4	7	5-7/8	5-1/8	2-7/8	1-7/8	1-5/16	2-3/4	390.0
1-1/4 - 1-3/8	9-1/16	6-13/16	6-1/2	3-1/2	2-1/4	1-7/16	3-1/4	820.0
1-3/8 - 1-1/2	9	7-1/8	6-1/4	3-1/2	2-5/8	1-9/16	3-3/8	1175.0
1-5/8	11-1/4	8-1/8	8	4	2-3/4	1-23/32	3-7/8	1625.0
1-3/4	12-3/16	8-1/2	9	4-1/2	2-7/8	1-27/32	4-3/8	1800.0
1-7/8 - 2	15-1/8	10-3/8	12	6	3-1/8	2-3/32	5-7/8	2600.0
2-1/4	17-1/8	11-7/8	14	7	3-5/8	2-3/8	6-7/8	3880.0
2-1/2**	20-1/2	13-1/2	15-3/4	8-1/2	4-1/4	2-5/8	8-1/4	7500.0

\* Available in stainless steel. A rugged rope thimble suggested for heavy duty services. \*\* Available in Cast Steel. Larger sizes available per request (with or without Gusset Plates).



HEAVY DUTY WIRE ROPE THIMBLE



REGULAR WIRE ROPE THIMBLE

According to Federal Specification FF-C-450, Type III, Class I.

## STAINLESS HEAVY DUTY WIRE ROPE THIMBLES - TYPE 304 & 316

SIZE (INCHES)	DIMENSIONS (INCHES)					APPROX. WEIGHT (LBS.)
	A	B	C	D	E	
1/4	2.19	1.50	1.63	0.88	0.44	0.08
5/16	2.50	1.88	1.88	1.13	0.50	0.10
3/8	2.88	2.09	2.09	1.13	0.66	0.25
1/2	3.63	2.63	2.75	1.50	0.88	0.45
5/8	4.25	3.09	3.25	1.75	1.00	0.68
3/4	5.00	3.50	3.75	2.00	1.25	1.20
7/8	5.66	4.19	4.31	2.25	1.50	1.85
1	6.13	4.63	5.00	2.50	1.56	2.20
1-1/8 - 1-1/4	7.13	5.33	5.38	2.88	1.88	3.80
1-1/4 - 1-3/8	8.38	6.67	6.50	3.50	2.25	8.60

## STAINLESS REGULAR WIRE ROPE THIMBLES - TYPE 316

SIZE (INCHES)	DIMENSIONS (INCHES)					APPROX. WEIGHT (LBS.)
	A	B	C	D	E	
1/16						0.01
1/8	1.88	1.06	1.25	0.69	0.16	0.02
3/16	1.88	1.06	1.25	0.69	0.22	0.02
1/4	1.94	1.06	1.31	0.69	0.28	0.03
5/16	2.13	1.25	1.50	0.81	0.38	0.05
3/8	2.38	1.47	1.63	0.94	0.44	0.06
1/2	2.75	1.75	1.88	1.13	0.56	0.12
5/8	3.50	2.38	2.25	1.38	0.69	0.24